

Fluid and Air



Quality
Hydraulic &
Pneumatic
sealing
products



An Evolving Business



Sealing materials have evolved significantly over the last fifty years. Improved quality, performance and seal designs have changed our conceptions of fluid sealing.

Barnwell is at the forefront of sealing technology, with over 30 years experience in providing industry with sealing solutions, backed up by guaranteed product quality and technical expertise.

We hold one of the largest stocks of Hydraulic and Pneumatic Seals in the UK, at our headquarters near Birmingham. They are available in a broad range of profiles and standard or special compounds, to suit a vast number of applications.

Each of our Customer Service Centres in Aylesbury, Bellshill, Bristol, Manchester and

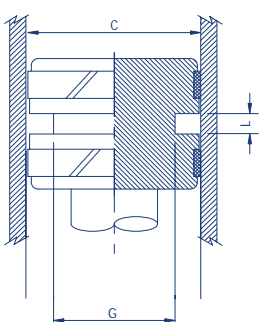
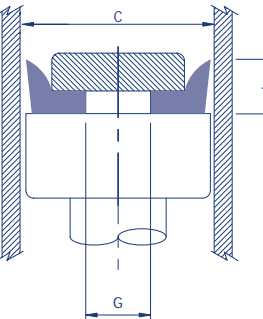
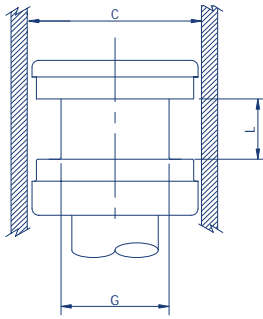
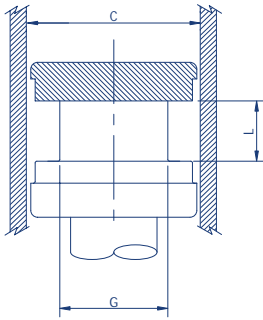
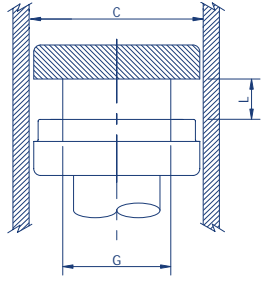
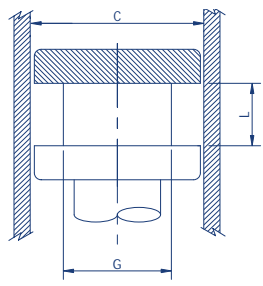
Smethwick are staffed by experienced, professional people, on hand to provide solutions for all your sealing problems. So contact them now for more information,

or use our special Sales Hotline:

0121 420 0770

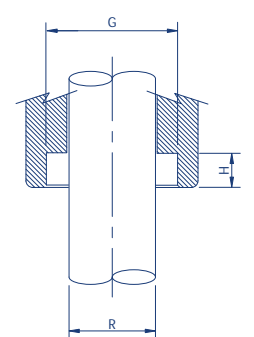
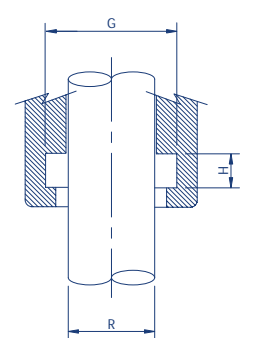
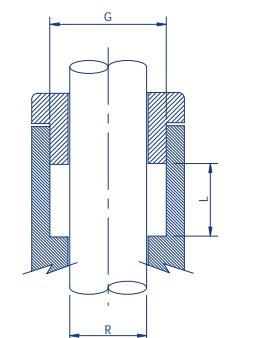
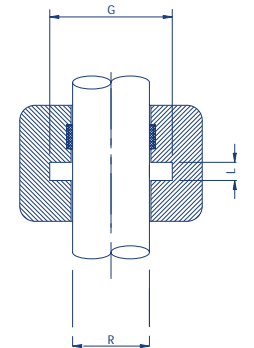
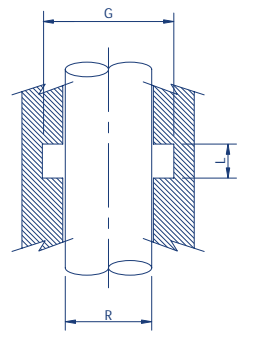


PISTON SEALS



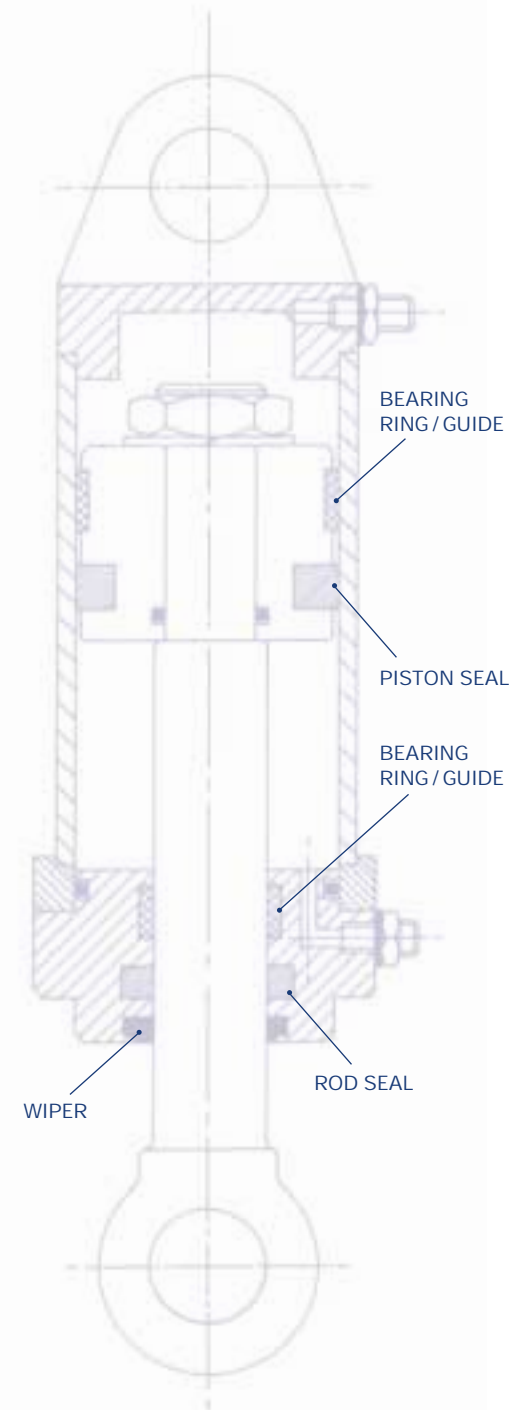
In addition to the standard seal profiles shown here, Barnwell stocks a substantial range of other sealing products, including Wear Rings in various materials - Far Eastern and American product ranges, plus non standard designs. This allows Barnwell to offer the complete solution for hydraulic and pneumatic seal requirements.

PROFILE	REFERENCE	P.S.I./BAR	MATERIAL	CYLINDER DIA.	SIZE LISTING
	FS (imperial)	PSI 3000	NBR + FABRIC	1/2 - 20	FS (CxGxL)
	FSM (metric)	BAR 200		13 - 490	FSM (GxCxL)
	FSO	PSI 6000	NBR + FABRIC +ACETAL	1 - 8 1/2	FSO (CxGxL)
	FSOM	BAR 400		25 - 360	FSOM (GxCxL)
	FGS	PSI 3000	NBR + FABRIC	1 - 7	FGS (CxGxL)
	FGSM	BAR 200		40 - 110	FGSM (GxCxL)
	FGSO	PSI 6000	NBR + FABRIC +ACETAL	1 1/8 - 7	FGSO (CxGxL)
	FGSOM	BAR 400		32 - 200	FGSOM (GxCxL)
	FS-W	PSI 6000	NBR + FABRIC +ACETAL	1 - 7 1/4	FS (CxGxL)W
	FSM-W	BAR 400		25 - 140	FSM (GxCxL)W
	FGS	PSI 6000	NBR + FABRIC +ACETAL	1 1/8 - 7	FGS (CxGxL)W
	FGSM-W	BAR 400		50 - 142	FGSM (GxCxL)W
	FS-L	PSI 6000	NBR + FABRIC +ACETAL	1 - 7	FS (CxGxL)L
	FSM-L	BAR 400		25 - 280	FSM (GxCxL)L
	PU	PSI 6000	POLYURETHANE	9/16 - 14	PU (CxGxL)
	PUM	BAR 400		10 - 360	PUM (GxCxL)
	BVP	PSI 10000	NBR + FABRIC OR ACETAL	15/16 - 26	BVP (CxGxL)
	MBVP	BAR 700		22 - 600	MBVP (GxCxL)
	U	PSI 2000	NBR NBR + FABRIC	5/16 - 20	U (CxGxL)
	UM	BAR 150		10 - 500	UM (GxCxL)
	FU	PSI 2600 BAR 180		5/8 - 10 1/2	FU (CxGxL)
	DE	PSI 1500	NBR	3/8 - 14	DE (CxGxL)
	DEM	BAR 100		12 - 250	DEM (GxCxL)
	FD	PSI 3000	NBR + FABRIC	3/4 - 16	FD (CxGxL)
	FDM	BAR 200		25 - 580	FDM (GxCxL)
	FD-W	PSI 6000	NBR + FABRIC +ACETAL	1 - 9 1/2	FD (CxGxL)W
	FDM-W	BAR 400		25 - 250	FDM (GxCxL)W
	FD-L	PSI 6000	NBR + FABRIC +ACETAL	3/4 - 10	FD (CxGxL)L
	FDM-L	BAR 400		25 - 280	FDM (GxCxL)L
	OPI-W	PSI 6000	NBR + POLYESTER +ACETAL	1 - 8	OPI (CxGxL)W
	OPM-W	BAR 400		25 - 320	OPM (GxCxL)W
	SDM-L	PSI 6000 BAR 400	NBR + FABRIC +ACETAL	25 - 250	SDM (GxCxL)L
	OPI-L	PSI 3000		NBR + POLYESTER +ACETAL	1 - 4
OPIM-L	BAR 200	25 - 125	OPIM (GxCxL)L		
	MBFC	PSI 2500 BAR 170	NBR + FABRIC NBR	5/8 - 8 1/4	MBFC (CxGxL)
	MBRC	PSI 500 BAR 35		40 - 95	MBRC (GxCxL)
	MBRC	PSI 500 BAR 35		1/4 - 16	MBRC (CxGxL)
				8 - 550	MBRC (GxCxL)



ROD SEALS

PROFILE	REFERENCE	P.S.I./BAR	MATERIAL	ROD DIAMETER	SIZE LISTING
	FS (imperial)	PSI 3000	NBR + FABRIC	3/16 - 18	FS (GxRxL)
	FSM (metric)	BAR 200		6 - 450	FSM (RxGxL)
	FSI	PSI 6000	NBR + FABRIC + ACETAL	5/16 - 6 1/2	FSI (GxRxL)
	FSIM	BAR 400		12 - 340	FSIM (RxGxL)
	FGS	PSI 3000	NBR + FABRIC	5/8 - 6	FGS (GxRxL)
	FGSM	BAR 200		30 - 90	FGSM (RxGxL)
	PU	PSI 6000	POLYURETHANE	1/4 - 12	PU (GxRxL)
	PUM	BAR 400		5 - 400	PUM (RxGxL)
	PDI	PSI 6000	POLYURETHANE	3/8 - 10	PDI (GxRxL)
	PDIM	BAR 400		4 - 360	PDIM (RxGxL)
	U	PSI 2000	NBR	1/8 - 18 1/2	U (GxRxL)
	UM	BAR 150		2 - 450	UM (RxGxL)
	FU	PSI 2600	NBR + FABRIC	1/4 - 9 1/4	FU (GxRxL)
		BAR 180			
	DI	PSI 2000	NBR	1/8 - 9	DI (GxRxL)
	DIM	BAR 150		3 - 180	DIM (RxGxL)
	BVP	PSI 10000	NBR + FABRIC OR ACETAL	1/2 - 24	BVP (GxRxL)
	MBVP	BAR 700		12 - 600	MBVP (RxGxL)



COMPOSITE SEALS

	CPS	PSI 6000	FILLED PTFE	1/4 - 20	CPS (CxGxL)
	CPS	BAR 400	+ ENERGISER	3 - 500	CPS (GxCxL)
	CPS		FILLED PTFE	3/8 - 20	CPS (CxGxL)
	CPS	BAR 400	+ ENERGISER	8 - 500	CPS (GxCxL)
	CPS	PSI 6000	POLYURETHANE	2 - 5	CPS (CxGxL)
	CPS	BAR 400	+ ENERGISER	20 - 200	CPS (GxCxL)

• THESE DESIGNS ARE ALSO AVAILABLE FOR ROD SEALING APPLICATIONS

WIPER SEALS

	MBW		NBR	3/8 - 8	MBW (RxGxH)
	MBWO		NBR	1/2 - 8	MBWO (RxGxH)
	MBWM		NBR OR POLYURETHANE	3/4 - 5	MBWM (RxGxH)
				12 - 200	MBWM (RxGxH)
	MBWS		NBR	5/8 - 6	MBWS (RxGxH)
				16 - 150	MBWS (RxGxH)
	MBY		POLYACETAL	3/8 - 18	MBY (RxGxH)
	MBYM			12 - 450	MBYM (RxGxH)
	AS		NBR OR POLYURETHANE + STEEL	1/2 - 4	AS (RxGxL/H)
				6 - 400	
	RS		NBR OR POLYURETHANE + STEEL	3/4 - 4	RS (RxGxL/H)
				6 - 220	

Technical advice, product samples and site visits from our team of experienced Sales Engineers are always available.

ATLAS

EDBRO

FASSI

HITACHI

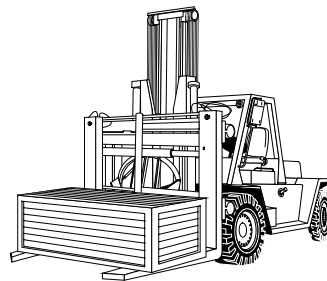
POCLAIN

HIAB

HYVA

JCB

We at Barnwell recognize the trend towards the supply of quality sealing kits, tailored to suit the specific requirements of maintenance, repair and overhaul (MRO). We supply kits for the major makes of machinery and vehicles for construction, materials handling, agriculture and off road applications. The fact that we carry one of the largest stocks of sealing products in the UK under one roof means that we are able to respond to customer requirements quickly and efficiently.



HYMAC

KOMATSU

PERFECTION

**Contact Barnwell
- the Kits Specialists!**

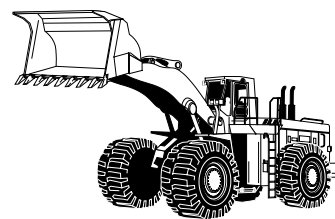
J.I. CASE

MITSUBISHI

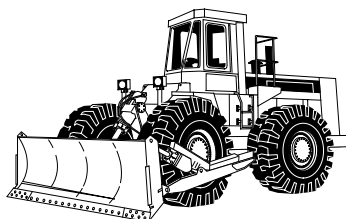
KATO

M.F.

PARKER



VOLVO



BOBCAT



**Contact your local
Barnwell Service Centre ...**

**...or phone our special
Sales Hotline:**

0121 420 0770

Headquarters and Central Warehouse

M Barnwell Services Ltd,
Reginald Road, Smethwick
West Midlands B67 5AS
Tel 0121 429 8011
Fax 0121 434 3016
e-mail sales@barnwell.co.uk

Bristol

Unit 13, Avonbank Industrial Centre,
West Town Road, Avonmouth,
Bristol BS11 9DE
Tel 0117 982 5245
Fax 0117 923 5623
e-mail bristol@barnwell.co.uk

Aylesbury

5 Bessemer Crescent,
Rabans Lane Industrial Estate,
Aylesbury, Bucks HP19 8TF
Tel 01296 431429/431591
Fax 01296 435716
e-mail aylesbury@barnwell.co.uk

Bellshill

Unit 14 & 16, Murray Place,
Righead Industrial Estate,
Bellshill, Lanarkshire ML4 3LJ
Tel 01698 749666
Fax 01698 749888
e-mail scotland@barnwell.co.uk

Manchester

Unit 36/37, Westbrook Trading Estate,
Westbrook Road, Trafford Park,
Manchester M17 1AY
Tel 0161 888 2330
Fax 0161 888 2296
e-mail manchester@barnwell.co.uk

Export

Tel 0121 429 8011
Fax 0121 420 3080
e-mail m.cash@barnwell.co.uk



BS EN ISO 9002:1994 (STOCKIST)
CERTIFICATE NUMBER RS 00530

**Visit us on the web at
www.barnwell.co.uk**

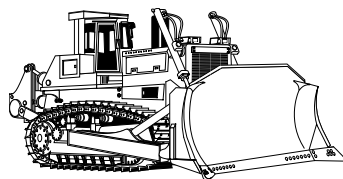


BARNWELL
THE SEAL OF APPROVAL

Special thanks to Wrayram Engineering Ltd and Hallite Seals International Ltd for their help in producing this brochure.

Stockholding and Supply. Items in this brochure may not necessarily be manufactured under a registered ISO 9000 management system. © All trademarks acknowledged.

M. Barnwell Services Ltd endeavours to ensure that the information contained in this publication pertaining to products and services is correct and fairly stated. However, we do not accept any liability for any errors or omissions therein. Reproduction in whole or in part of this publication without our written authorisation is prohibited.



KUBUTO



NISSAN

PALFINGER

TOYOTA